



Student Pick-Up and Drop-Off Procedures

School Year 2026–2027

As part of ongoing campus improvements, Overbrook School for the Blind (OSB) is constructing a new dining hall and expanding our student pick-up and drop-off area.

Beginning with the Extended School Year (ESY) Program, which will run from July 6 through August 6, 2026, the current entrance and drop-off area along Wynnewood Road will be closed. All student pick-up and drop-off will take place at the front entrance of the school on Malvern Avenue. Updated procedures will remain in effect through ESY and continue into the 2026–2027 school year unless otherwise communicated by OSB.

OSB's Transportation and Security Teams will be on-site to direct traffic and assist with arrival and dismissal procedures.

Street Access

- Malvern Avenue will be closed to the general public traffic between Wynnewood Road and North 64th Street from 6:00 a.m. to 6:00 p.m. on school days.
- Parent vehicles and school district transportation vehicles will still be permitted to enter this area for student pick-up and drop-off.
- Staff, parents, and visitors who need to access campus parking will follow the temporary parking access route designated by OSB while Malvern Avenue is closed to the general public traffic.

Arrival and Dismissal Times

- ESY will run from July 6 through August 6, 2026, from 8:30 a.m. to 2:00 p.m.
- Student arrival and dismissal procedures will follow the traffic flow and drop-off/pick-up locations outlined below.

Traffic Flow

- During school hours, Malvern Avenue will operate as a one-way roadway for school traffic, with entry at Malvern Avenue and Wynnewood Road and exit at Malvern Avenue and North 64th Street.
- All vehicles will enter Malvern Avenue at Wynnewood Road and exit at North 64th Street.

Parking Lot Access

- Staff will access the parking lot via Wynnewood Avenue.
- OSB will hold additional discussions regarding safety.

Drop-Off and Pick-Up:

- **Entry Point** - Malvern Avenue and Wynnewood Road
- **Exit Point** - Malvern Avenue and North 64th Street.

Student Drop-Off and Pick-Up Zones

- School vehicles will queue on Wynnewood Road.
- Parent drop-off will be located on the west side of campus, closer to Entry Point 1 on the Fieldhouse side.
- The Friedlander drop-off/pick-up location will remain in use for designated students.
- OSB Transportation and Security staff will direct vehicles to the appropriate zone.

Signage and Zone Identification

- Colored cones will be used to distinguish each loading/unloading and traffic area.

Staff Communication During Bus Duty

- Staff, in addition to supervisors, will use walkie-talkies during bus duty to support communication and traffic coordination.
- OSB is preparing additional walkie-talkies for use and will share the related internal procedure with staff once finalized.

Procedures That Remain the Same

- All other arrival and dismissal procedures will remain unchanged.
- Student sign-in procedures, staff assistance, and other support services will continue as usual.

Public Transportation

SEPTA provides bus, trolley, and train routes that stop on or near the Overbrook School for the Blind campus. Families, staff, and visitors who use public transportation should allow extra time during construction and follow all posted pedestrian detours and campus signage.

- SEPTA Trolley and Bus Routes 10, 46, and 105 have stops at or near the corner of 63rd Street and Malvern Avenue. Route 105 has been rerouted and also stops at the Rotunda, along with Route 65.
- SEPTA Bus Route 65 stops at the Rotunda directly in front of the school entrance.
- SEPTA's R5 Train stops at Overbrook Station on 63rd Street, approximately a ten-minute walk from campus. From the station, exit and turn left onto 63rd Street, cross Lancaster Avenue, and turn right onto Malvern Avenue. The Rotunda will be on the right.
- There is expected to be minimal impact to SEPTA Trolley and Bus Routes 10 and 46 stops at the corner of 63rd Street and Malvern Avenue.
- OSB will continue to review the path of travel for buses serving the area. Depending on SEPTA routing and construction conditions, stops may be located at or near 64th Street and Malvern Avenue or 63rd Street and Malvern Avenue.

The following reference images show current public transportation information and nearby transit stop locations for the Overbrook campus area.

Public transportation route information for the Overbrook campus area.



Map view of nearby public transportation stops around Malvern Avenue, Wynnewood Road, and 63rd Street.

Parent Communications and Updates

- Because the ESY schedule differs from the standard school year schedule, OSB will send two parent notices: one ESY notice now and a second notice in August highlighting the school-year procedures, including Monday through Friday routines and delayed starts on Mondays.

Any modifications to this transportation plan will be communicated immediately through an email attachment and OSB's regular parent communication channels. Changes will be summarized in an introductory statement and, where applicable, included in the body of the notice.

- Transportation and construction-related communications will be sent from Pamela Vasserman, Director of Development and Communication, at pamela.vasserman@obs.org. Please save this contact so OSB email updates do not go to your spam inbox.
- All parent communications about construction and transportation will be compiled into a current reference document and included in the introductory packet for newly enrolled families as the year unfolds.

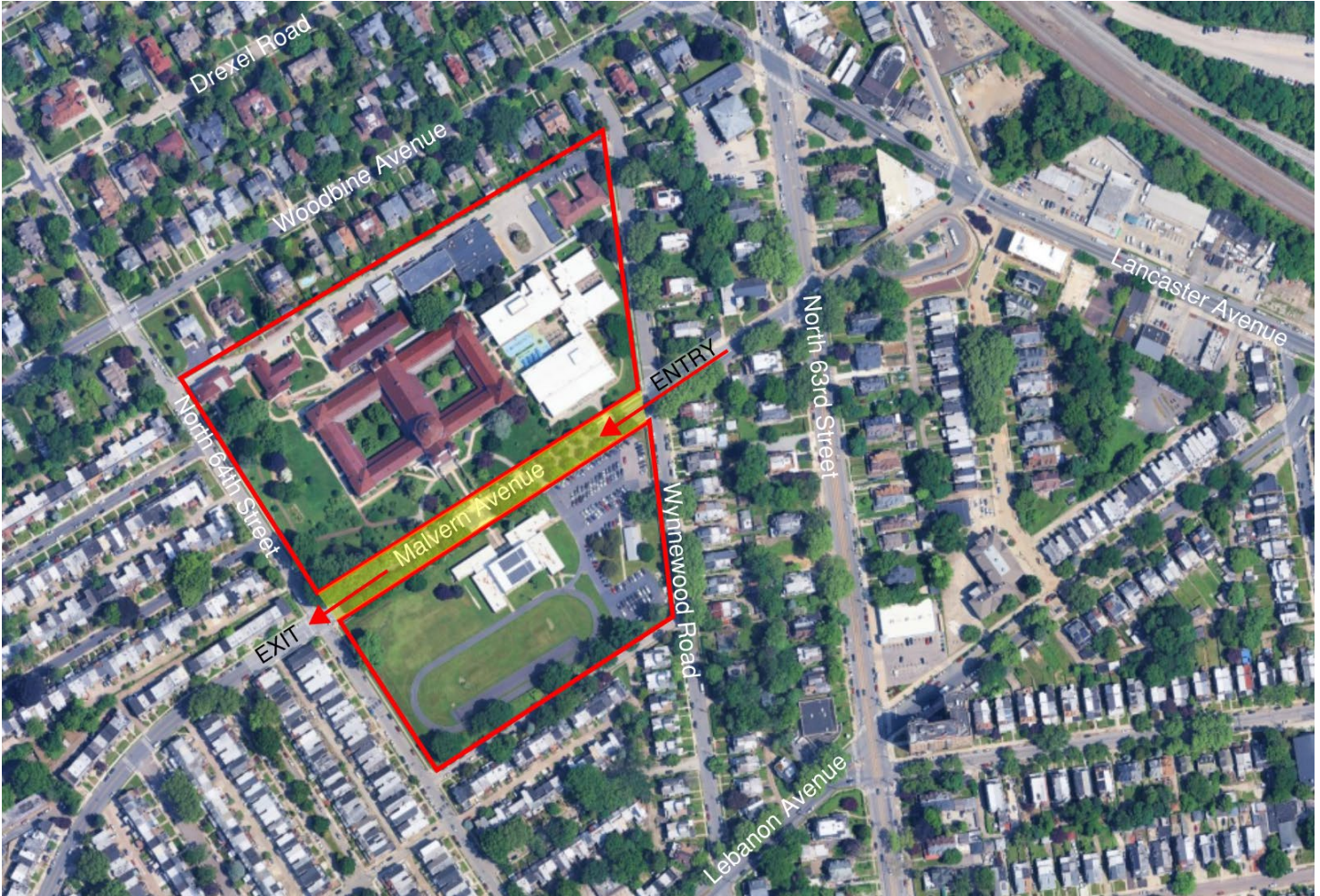
Questions

- Questions related to transportation, arrival, and dismissal may be directed to Beth Scherneck at mscherneck@obs.org.

Thank you for your patience and cooperation as we complete these important campus improvements. These upgrades will provide a safer and more efficient arrival and dismissal experience for our students and families.

Student Pick-Up and Drop-Off Procedures

Google Earth View



Enlarged Street Diagram – Malvern Avenue

